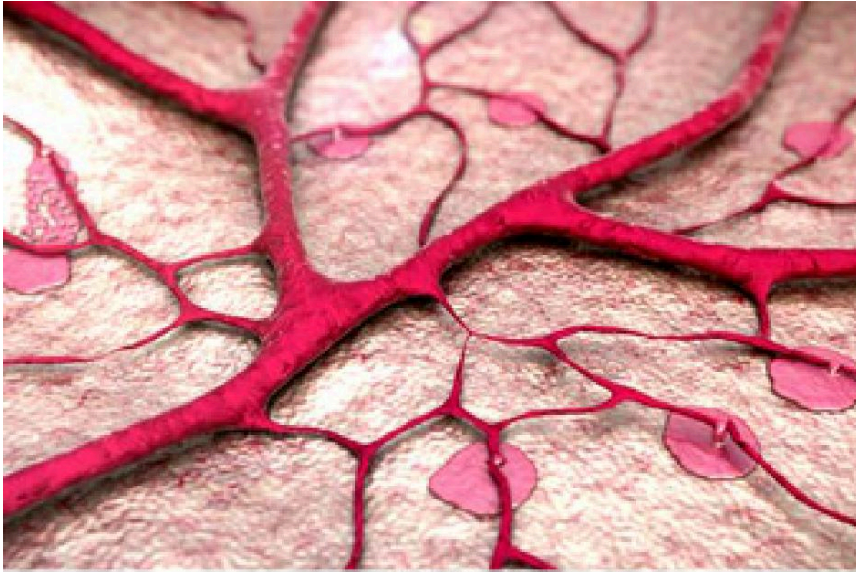




Intracerebral Hemorrhage (ICH)



Overview

This is bleeding that happens inside your brain. Most often, it's a rupture of tiny arteries in your brain. It can happen deep within the brain, or near the brain's surface. It leads to stroke and to a dangerous buildup of pressure in the brain.

Causes

What causes this type of hemorrhage? It's linked to high blood pressure, bleeding disorders or abnormal arteries in your brain. It can be caused by medications known as "blood thinners." Things like head injury, a tumor or illicit drug use cause it too. And sometimes, we don't know the cause.

Symptoms

What are the symptoms? You may have a sudden, severe headache. You may vomit and feel sleepy. Your speech may be slurred. One side of your body may feel weak. You can have seizures, and you may lose consciousness.

Treatment

This type of hemorrhage is a medical emergency. We need to stop the bleeding and lower the pressure in your brain. That can be done with surgery, medications and other methods. And later, you may need therapy to help with complications of stroke. Your healthcare provider will create a plan that's right for you.

